

# XAVIER 32



4



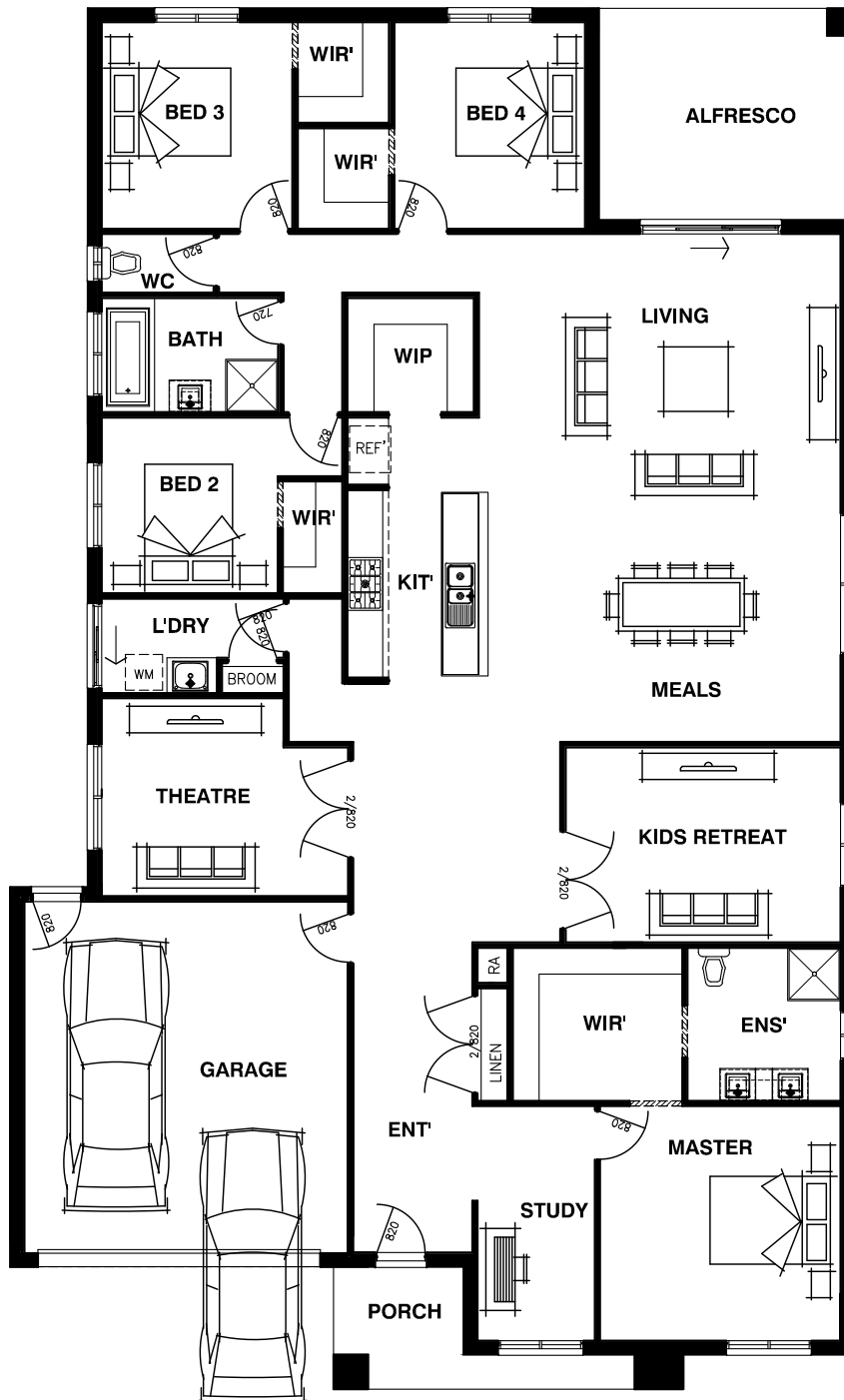
2



3



2



16m

Min. Lot Width

32m

Min. Lot Depth

## DIMENSIONS

LOUNGE	3730mm x 4100mm
MASTER BEDROOM	4100mm x 4000mm
BED 2	3000mm x 3000mm
BED 3	3250mm x 3520mm
BED 4	3250mm x 3520mm
LIVING	6165mm x 4460mm
MEALS	6010mm x 4200mm
ALFRESCO	4360mm x 3610mm
GARAGE	5520mm x 6000mm
KIDS RETREAT	4690mm x 3330mm
THEATRE	4200mm x 3375mm

OVERALL LENGTH	23555mm (23.55m)
OVERALL WIDTH	14400mm (14.40m)
MINIMUM BLOCK DEPTH	32M

Ground Floor	247.85 sqm	26.68 sqrs
Porch	6.36 sqm	0.68 sqrs
Garage	36.2 sqm	3.9 sqrs
Alfresco	15.73 sqm	1.69 sqrs
<b>Total Area</b>	<b>306.14 sqm</b>	<b>32.95 sqrs</b>

House size on brochure is based on R1 Facade. Size may vary dependant on facade. Refer to working drawings for complete dimensions.